

Drums set catalogue

Catalogue 2012-2013



 **CVL[®]
DRUMS**

www.cvl drums.com

Even in the catalogue CVL respects its own philosophy : A WHOLE OTHER STORY.

Not the usual catalogue but a tool to create a custom-made instrument ... step by step, trying to help drummers since the choice of wood until the finish, allowing them to be able to build what they want and what reflects their needs .

CVL is innovation, research and news ... completely Made in Italy.

The CVL research increases with Evo shell project, ibrid wood project e graphics project...



Preface pag. 3

Types of wood pag. 5

Evo shell project pag. 6

Eco shell project pag. 6

Shells dimension pag. 7

Finishes and colours pag. 8

Optional pag. 16

Specials set pag. 16

Basic series pag. 19

Drums band pag. 20

Evo shell project pag. 21

I.B.E. Shell project pag. 22

Special parts pag. 23

Graphics project pag. 24

Lugs project pag. 25

Cases pag. 26

Merchandising pag. 27

Endorsers pag. 28

Contact pag. 30



THE
CVL
LEGNO

CVL Drums is a registered trademark

This catalogue is a CVL Legno Srl property - to copy or use this file is forbidden without specific written authorization





The best peculiarity of a CVL Drums product is the Product code, thanks to the international quality system ISO 9001.

woods, glues, varnishes must pass strictly tests when they arrived to CVL plant and they must respect several rules of conservation.

each CVL Drums product has a code inside all shells that needs to know all its story.

when the set is delivered, it will be accompanied by a certificate of originality and warranty that contains all info about wood, finishes, dimension and optional features.

Infact CVL Drums, during the building process, reports all working and features in a schedule with the same code inside the shells and after fills the customers certificate.

This allows to rebuild the story of single shell and set to give the traceability, to give the warranty (until 5 years) but in particular to offer to the customers the possibility to add new shells with not only the same finishes but also the same sound features thanks to the same wood selection, treatment and working.

TRACCIABILITA' PRODOTTO
Strumento prodotto e assemblato interamente in Italia

Grazie per aver scelto CVL Drums

CVL Drums, con il codice prodotto, è in grado di fornirti a distanza di tempo la possibilità di aggiungere nuovi tamburi al tuo set mantenendone le stesse caratteristiche, semplicemente comunicando il codice sotto riportato.

Questo codice, stampato all'interno dei tuoi tamburi, ne garantisce l'originalità, la qualità dei materiali usati, la cura nella costruzione e la garanzia.

codice FUSTO:

codice TAMBURI:

Settimani e giorni decorati:

COMPOSIZIONE SET

Tom Ø "x" h " spessore mm ... strati

Tom Ø "x" h " spessore mm ... strati

Tom Ø "x" h " spessore mm ... strati

Ftom Ø "x" h " spessore mm ... strati

Ftom Ø "x" h " spessore mm ... strati

Rullante Ø "x" h " spessore mm ... strati

Cassa Ø "x" h " spessore mm ... strati

PARTICOLARI:

CVL LEGNO s.r.l.
Via Industriale, 20/11
20133 Cinisello B. (MI)
Tel. 02 490396
Fax 02 490396
info@cvllegno.com

Assemblea con certificazione qualità ISO 9001

www.cvllegno.com
www.mysql.com/cvllegno
www.mysql.com/cvllegno
www.facebook.com/cvllegno

Data*

CONTROLLO QUALITA'

* Validità garanzia

It is only necessary to communicate the certificate code or shell code of your set!

You could have two bass drums with different dimensions to use in more situations, with the same toms for example.

A great sample of quality, certified and of endurance that comes from CVL Drums...

CVL Drums is a registered trademark

This catalogue is a CVL Legno Srl property - to copy or use this file is forbidden without specific written authorization



CUSTOMIZE YOUR SET

Woods and handcraft by CvL Drums.

Welcome in the custom world, welcome into CvL Drums factory:
come on and choose your favorite wood for tom, bass drums and

snare



choose your best diameter and its depth for each drum and create
your custom-made drum kit.

If you want, you could ask to CvL staff, to find the kit for your
sound and needs



Not only the wood and dimensions but also the colour!

Now, customize your colour and finishes.

You can choose between a lot of colours ideas or create your own
colour



Add optionals and your own details



CvL follows all steps in working process, from selection of raw wood and wooden suppliers, until the last finishing of product.

A CvL drum kit born from the choice of the best tree, the best wooden layers with the best wooden veneer for each of the six essences used in CvL instruments. All this researches and works are done directly by CvL staff.

These wooden choices are important for the factory, because they allow to give the best instrument also to the most exigent drummer. CvL is continuously involved to find the best sound for the musician, to satisfy needs with a professional skill and competence.

The birch wood is a medium weight, strong, tough and elastic.

A drum kit made by birch is very well suited for recording studios, schools and in all situations where you need a controlled sound.

A type of wood with a good price. CVL birch sounds different from other birch in drum market, due to a innovative building process.

ABT series



BIRCH

The maple wood comes with straight and compact grain. It isn't a heavy wood, its specific weight is less than birch and it presents a good strength and elasticity.

A drum kit made by maple can be use into different musical performances, from jazz to metal rock, thanks to the great range of frequencies that it produces. Maple is the choice of those who claim a good attack and volume.

ACR series



MAPLE

The mahogany is a hard, medium-heavy wood with a fine texture and wavy grain, it has a high elasticity.

A mahogany drum kit gives a very good attack, a well-defined note with warm sound, rich in low frequency average. Thanks to its characteristic of elasticity and the wood fiber, the mahogany is full of harmonics, more than other types of wood used by CVL. If we can summarize in few words mahogany characteristics: it makes double sound and power.

AMG series



AFRICAN MAHOGANY

The ash wood has a straight grain with a texture from a medium to a coarse.

It offers an excellent qualities of strength. Its specific weight is heavier than the birch.

A drum kit with this wood has the same characteristics of the birch, but more powerful and it is great on live performances.

AFR series



ASH

The chestnut is a medium heavy wood, its texture is similar to oak wood, but it not present wood window pane. The chestnut, as well as the oak, is used for wine staves and for the extraction of tannin.

The chestnut specific weight is placed between the Maple and the Bubinga.

The chestnut choice comes from a CVL's research to find a warmer sound than the maple one, with the same power and well-defined sound but with bass timbers more stronger. If you will try it, you will feel a magic influence due to unique attack and dynamics, never heard in the field of drum instruments.

ACT series



CHESTNUT

The Bubinga is a hard and heavy wood. It has a fine-grained, less porous, uniform texture and straight thread. Its specific weight is the highest compared to five other wooden essences used by CVL.

A Bubinga drum kit gives the top of timbers, as woods described above, but it gives more to the sound thanks to lower frequencies with a warmer sound, with an attack always well-defined and maximum flexibility in playing.

ABB series



BUBINGA



EVO SHELL PROJECT

Beech



- wood with a medium density and a sonorous timber that have medium high frequencies
- powerful and defined sound with controlled harmonics

sassofrasso



- Wood similar to Chestnut but lighter
- Sound with more bass than chestnut

Fir



- Soft wood that have more presence of harmonics than other wood.
- defined and controlled sound with great bass

Padouk



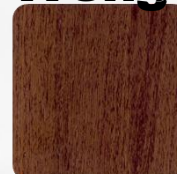
- medium soft wood with a warm sound and defined harmonics
- perfect for the acoustic use even if it is possible to use in live contest thanks to the "full-bodies" sound

Poplar



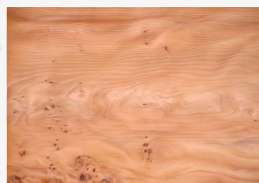
- Soft and light wood with a good control of medium lower frequencies but not so powerful so it is used jointed to other woods like mahogany or maple to achieve vintage sound
- Advised for drum band shells

Wenge'



- Hard wood with a linear fiber, gret attack and opposite to the bubinga sound
- "cold" sound with a set sound and controlled harmonics. Defined sound and good powerful but also a high timber

Esotic



Contact CVL to create your shell: thickness, type of wood and type of shell or mixed woods shell to create the sound sewing to your request and needs.
The shell is the main part of drums

EVO SHELL PROJECT



CVL Drums warrants the provenience of woods used for its drums and it warrants the environment and re plant of wood plants.

CVL Drums starts this project to achieve the production of instruments with a lower environmental impact and to save the nature and plants, thinking to a future eco sustainable.

A project that continue using varnish and glue with small or none quantity of danger components.



CVL Drums

BASS DRUMS

14"
16"
18"
20"
22"
24"
26"

from 10" to 40"



thickness 8,1 mm

from 12" to 24"



thickness 6,3 mm

13"
14"
16"
18"
20"
22"
24"
26"

FLOOR TOM

from 4" to 16"



thickness 5,4 mm

TOM

6"
8"
10"
12"
13"
14"
16"

DEPTH

* Contact CVL for different sizes

* diameter 24" e 26" with max depth 24"

STANDARD

CVL



CVL has a long experience in lacquer/varnish process, this experience introduces the drummer into a world of infinite colours without any cover or wrap. CVL uses very elastic lacquer/varnish to leave the maximum vibration of the wood and to ensure the long life of the finishes.
A working-process made completely by hand by skilled workers, that are able to apply many thin layers of lacquer/varnish without defects, leaving the best smooth surface.

NATURAL LACQUER

A wide choice of shiny finishes and colours, especially designed to highlight the beauty of wood and wooden veneer.

Colours are tested for lasting, without any change in aging and the lacquer surface is studied to be shock-resistant. CVL paints are slightly different depending on the type of wood on which they are applied.

SPECIAL EXTERNAL WOOD

Particular and gifted external sheets of wood as the "zebrano" or painted woods worked with innovative techniques. These last wooden sheets are glued directly into the main moulding, looking to drawing of veneers. Available in lacquer or mat finish and with X veneers.

OPEN OR CLOSE POPE MAT

CVL presents the cheaper finish line called "satin-mat"!

This finish allows to see the wooden veneers or less, you can feel them with your hand on shell surface, and it makes special lighting effects.

SPECIALS

Special colours, like nacre/pearl or the chameleon, Even in this case, CVL doesn't use a cover, but only innovation and imagination ...

Special effects or varnish to create special finishes

SPARKLES

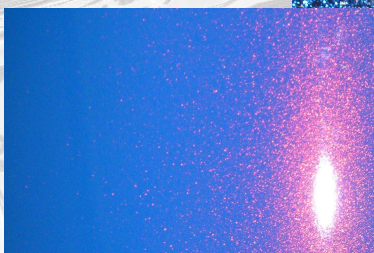
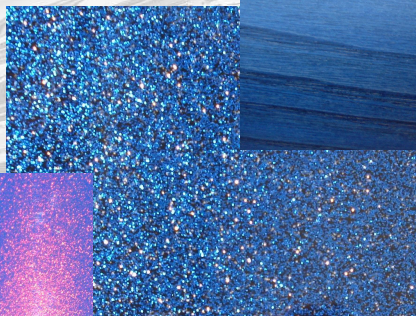
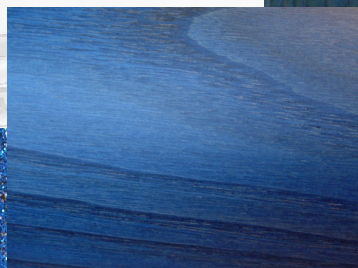
The maximum of customization allows to our customers to make also the choice of the grain of glitter for sparkles and their density. Not a cover, but a shiny sparkle varnished. CVL gives to customers many choices and also the chance to make colour experiments on new finishes, mixing together different sparkles. Now available also in mat finish

FRAYED

The glossy and mat versions are news introduced by CVL that allow the drummer to choose the colour of frayed to finish his custom kit. There are also many combinations of colours, keeping all the flexibility of wooden shell.

CUSTOM

Custom colours from your fantasy or your sample



CVL Drums is able to customize the colour of internal surface of drum: Trasparent/Black/White

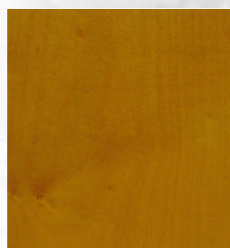
In the next pages some ideas of finish. All mat and lacquer finishes are available also in lacquer and mat finish



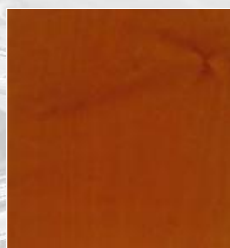
finishes and colours

FINISHES AND COLOURS

Maple



AC 03



AC 04



AC 06



AC 07



AC 08



AC 14



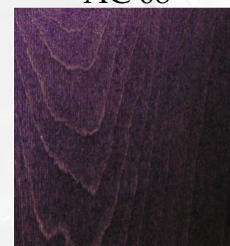
AC 21



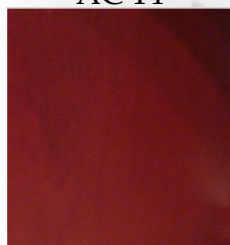
AC 22



AC 23

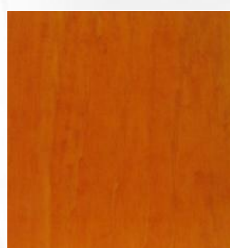


AC 25



AC 26

Birch



BE 04



BE 06



BE 08



BE 10



BE 21

Bubinga



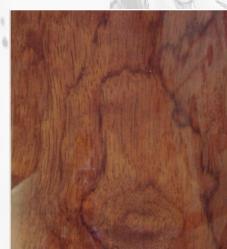
BU 18



BU 21



BU 23



BU 24

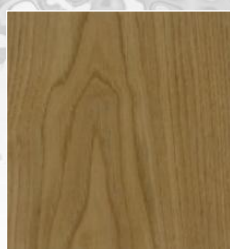


BU 25 diamond

Chestnut



CA 06



CA 17



CA 18



CA 21



CA 24



FINISHES AND COLOURS

Ash



FR 03



FR 04



FR 06



FR 07



FR 08



FR 09



FR 14



FR 21

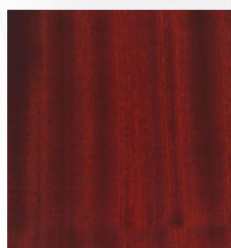


FR 22



FR 23

African mahogany



MO 06



MO 14



MO 18

Mat sparkle



MS 01

Indicative colours



FINISHES AND COLOURS

Sparkle



SP 02 fine grain



SP 03 coarse grain



SP 08



SP 10



SP 65



SP 30



SP 33



SP 34



SP 35



SP 36



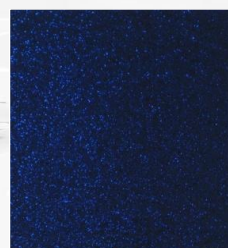
SP 39



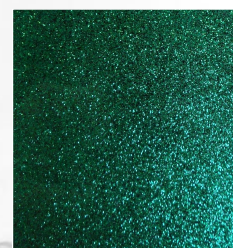
SP 46 gold silver



SP 42



SP 43



SP 40



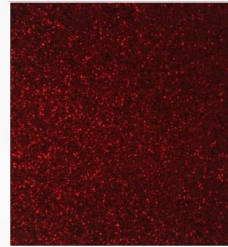
SP 54



SP 12 gree gold silver



SP 41



SP 45



SP 37



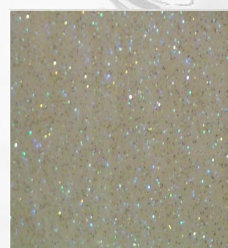
SP 47



SP 48



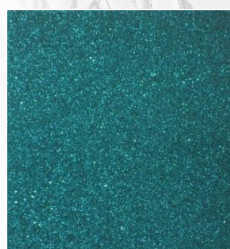
SP 49



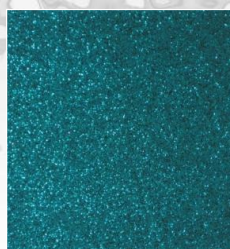
SP 50



SP 52 gold silver red



SP 44 fine grain



SP 38 coarse grain



SP 55 gold blue



SP 56 gold violet

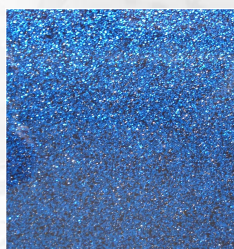


SP 62 silver blue

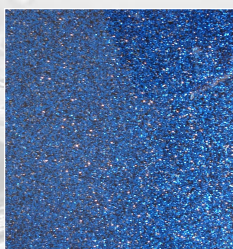


Indicative colours

FINISHES AND COLOURS



SP 60 blue silver



SP 59 blue gold silver



SP 61 blue gold



SP 57 black blue



SP 66 violet gold N



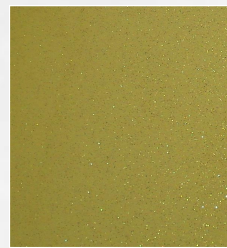
SP 70



SP 67 violet gold B



SP 69



SP 68



SP 73



SP 58



SP 71

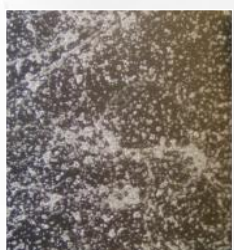


SP 72

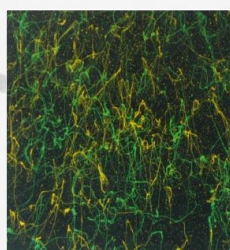


SP 74

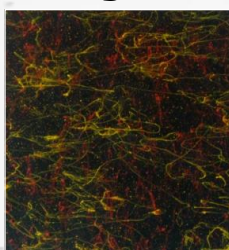
Frayed



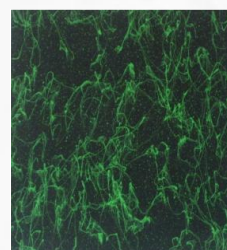
SF 20 mat



SF 25 mat



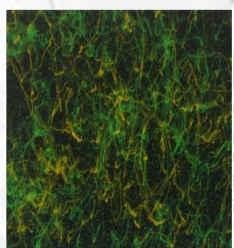
SF 26 mat



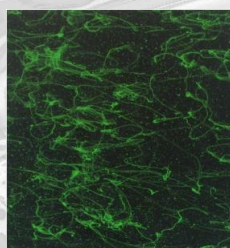
SF 27 mat



SF 28 mat



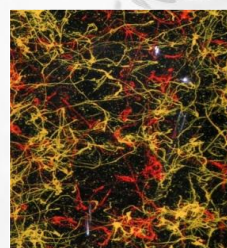
Sf 29 lacquer



SF 31 lacquer



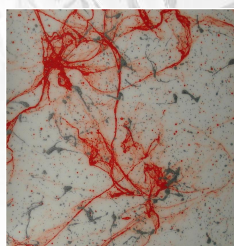
SF 32 lacquer



SF 34 lacquer



SF 36 mat



SF 37 mat



SF 38 mat



SF 39 mat

Indicative colours

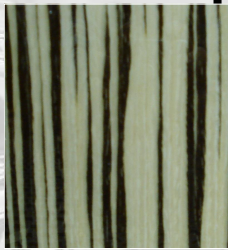


FINISHES AND COLOURS

Special external wood



Sx 01



Sz 01



Sz 02



Sz 03



Sz 04



Sb 01



Sa 01

Mat special external wood



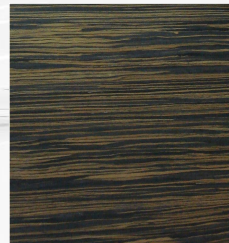
Sz 05



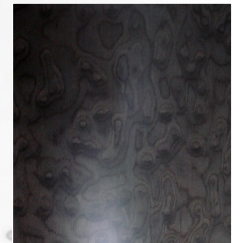
OP 11



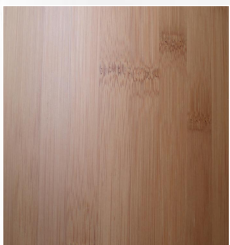
OP 13



Sz 06



So 02



Sb 02



So 03



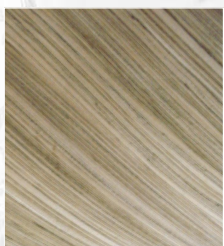
So 04



OP X1



So 05



OP X2



Sz 07

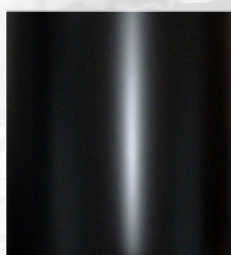
New X veneers

Indicative colours



FINISHES AND COLOURS

Mat



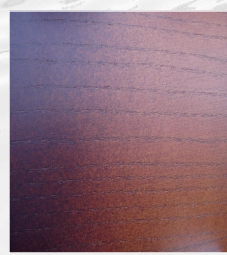
OP 07



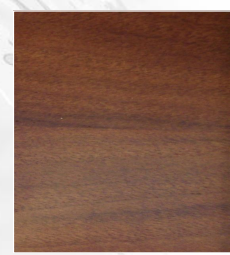
OP 01



OP 02



OP 08



OP 10



OP 06



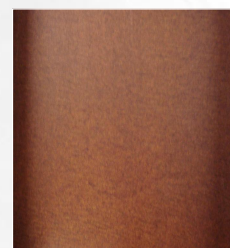
OP 03



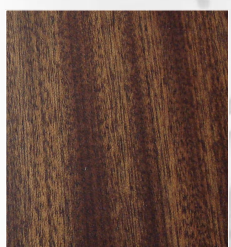
OP 04



OP 05



OP 09



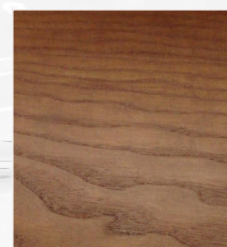
OP 17



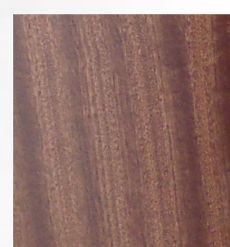
OP 12



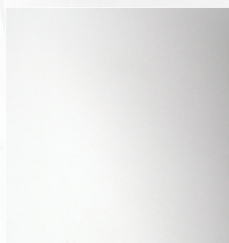
OP 15



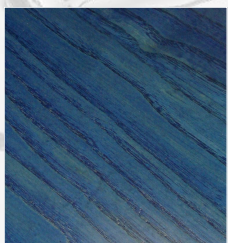
OP 24



OP 16



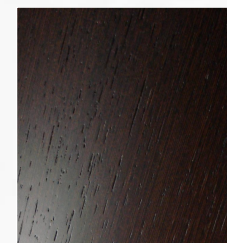
OP 14



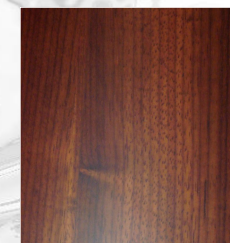
OP 18



OP 19



OP 25 wg



OP 23 pd



OP 25



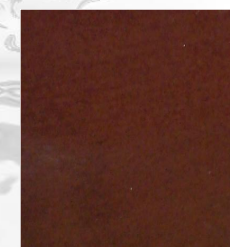
OP 26



OP 22



OP 24



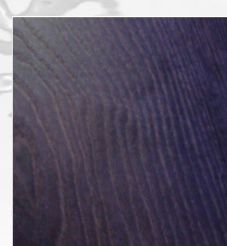
OP 21



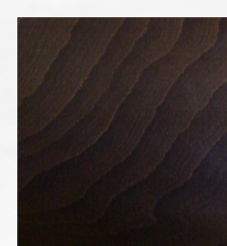
OP 27 cl



OP 28



OP 20



OP 29

Indicative colours

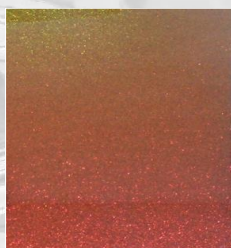


FINISHES AND COLOURS

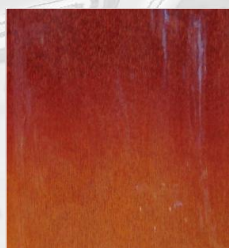
Specials



Sc 01



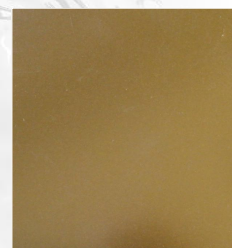
Sc 02



Ss 01



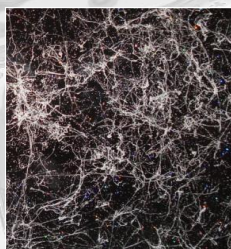
Sp 04



Sp 08 gold mirror



Sp 01



Sp 02



Sp 03



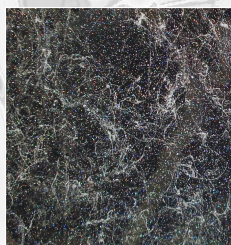
Ss 02



Ss 03



Sp 04



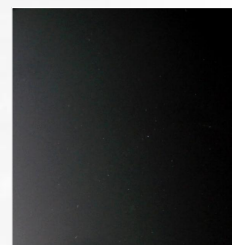
Sp 05



Sp 0A



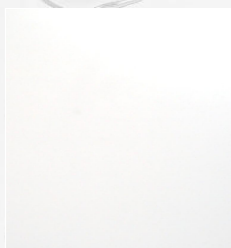
Sp 07 silver mirror



Sp 0B



Sp 00



Sp 0C



Sn 01 vintage



Sp 0D

Custom



Custom colour

Choose a finish and make changes or join two finishes
You can change all finishes with darker or lighter colours or different colours or use a lot of glitters or frayed colours.
If you don't see your colour, contact CVL that create the colour for you.
Our limit is your imagination...

Indicative colours



CyL Drums removes all vibrations and sound Interferences, ensures the best tuning endurance and details care in all its set and snares thanks to:

- Lug threads for tension rod made with brass
- Plastic anti-vibration gasket between shell and lug
- Washers of tension rods made with plastic + metal
- Lug fixing screws with elastic washer + support washer

- Chrome hardware
- Black hardware
- 23 mm Triple flange hoops
- Bass drum black or white Remo head
- Custom resonant BD head
- Bi-colour bass drum CyL Drums logo
- Remo ambassador head CyL Drums marked
- Remo emperor head CyL Drums marked
- Evans head
- Tube suspension system
- Tip Suspension system
- Bass drum hoops with different colour
- Bass drum Tom tom holder
- Hardware bicolor
- 50% lugs position
- Reinforcement rings
- Beech or mahogany wooden hoops



Special materials

OCTABONS

Dimensions

Ø 6"x 205 mm	• Thickness 5,4 mm
Ø 6"x 255 mm	• Chrome or black hardware
Ø 6"x 305 mm	• 23 mm Triple flange hoops
Ø 6"x 355 mm	• Available all CyL Drums finishes
Ø 6"x 405 mm	• Remo heads CyL Drums marked
Ø 6"x 455 mm	• Octabons standard holder
Ø 6"x 505 mm	• Type of wood available: birch, ash, maple, african mahogany, chestnut, bubinga
Ø 6"x 555 mm	



Special set



FREE SHELL JAZZ SET

The sound studies have allowed CVL to create a special drum kit, made by wooden shells completely free from hardware, so the wooden shells can vibrate giving its own harmonics.

Wooden shells of Tom Tom are free without lugs or hardware, such as the legs of bass drum and the Floor Tom. In this way CVL gives to drummers a sound rich in harmonic and very sensitive to brushes or sticks.

All drums have wooden hoops and hand made mechanical parts to obtain many sounds looking to the tuning of instrument.

Diameter

Tom
8"
10"
12"
13"
14"
Bass drum
18"
20"

- Type of wood: African mahogany
- Mono tuning system
- African mahogany wooden hoops
- Remo ambassador heads CVL Drums marked
- All lacquer or mat mahogany finishes available or custom colour
- Shell thickness: 5,4 mm for tom e 8,1 mm for bass drum
- Tom brackets, bass and floor tom legs connected to tune heads system. No holes for lugs on shells, Made in Italy hardware



Specials

TRAVEL SET

Designed and tested shells for this set to joint the travel comfort with a high sound quality.

All shells can put inside the bass drum thanks to a particular easy open/close system for this set.

Not only...the set is available with also the new mat and shade finishes, create to have a high sound quality and potency. Design and easyness at same time.

Dimensions

10"x 8"
14"x 9,5"
14"x5"
20"x 16"

- Chrome and black hardware
- 23 mm Triple flange hoops
- Open close shell system
- Type of wood: ash and maple
- Special lighter shell with reinforcement rings
- Remo ambassador heads CVL Drums marked
- Specific bags available for set
- Shade mat finish brown and orange or custom mat colour



CORTAIS SET

A Made in Italy set with a floor tom and one or two tom/timbales.

All dimensions and finishes are custom and you can choose also the type of wood. If you need, a open close shell system is available to put the tom/timbales into bigger shell.

An informal simple set, easy to move but great in all situations. Your new special set...

- Chrome hardware
- Black hardware
- All finishes available
- Tom/timbales suspension system
- Type of wood available: birch, ash, maple, african mahogany, chestnut, bubinga
- Remo ambassador head CVL Drums marked
- Remo emperor head CVL Drums marked
- Available with or without open shell system
- Special shell

Dimension

10"x 8"

16"x 24"

* custom dimension



SPINER SET

A compact set designed to have a great sound quality but with small dimension. The result is a great sound for your live.

A set simple to move thanks to less hardware like floor boom for tom and cymbal.

A great attack thanks to depth of CVL shells and a definite and stopped sound

- All finishes available
- Chrome or black hardware
- Type of wood: ash or maple
- Balance system in the bass drum
- Remo ambassador head CVL Drums marked
- Remo emperor head CVL Drums marked
- Special strong shell with reinforcement rings
- Balanced suspension system for tom, snare, floor tom and cymbal
- 23 mm Triple flange or wooden hoops

Dimension

12"x 7"

14"x 12"

Full 12"x5"

20"x 13"

* custom dimensions



Special Set

A shell characterized by an exciting sound. A deep and powerful sound with a great attack.
CVL develops standard shells for customers that need a standard set.
A new sound thanks to less thickness of shells with reinforcement.
A high quality and building technology to have a special set with a special price.

- Chrome hardware
- Black hardware
- Black or white bass drum Remo heads
- 2,3 mm Triple flange hoops
- Bi-colour bass drum CVL Drums logo
- Lighter shells with reinforcement
- Tube suspension system
- Tip Suspension system
- All finishes available
- Remo ambassador head CVL Drums marked
- Remo emperor head CVL Drums marked

SHELL FEATURES

BASS DRUMS

4,5 mm + reinforcement
TOM/FLOOR TOM/SNARE
4,5 mm + reinforcement



- Ash (BFR series)
- Maple (BCR series)



Classic Series



Light shells with a powerful and defined sound and completely customized



- Type of wood: ash, birch, beech, maple
- Dimension: custom
- Chrome or vintage hardware
- 23 mm Triple flange hoops
- CyL wooden hoops
- BD hoops with claws
- Lighter shells with reinforcement
- Belt support
- Rope tension system
- All finishes available
- Remo head CyL Drums marked
- Evans head
- (possibility to mount resonant head)
- Custom parts or working upon request



Drum Barrel



VINTAGE SHELL

SHELL FEATURES

*Selection of
African mahogany + poplar
that respect the parameters defined with
ISO 9001 certification*

A type of shell that comes from a long research and study of features of wood and shell conformation to obtain a "vintage" sound of the past using the achievement of actual technology.

The selection/conservation of wood to have the sound features of the past.



BUBINGA CASTAGNO

SHELL FEATURES

*Selection of
Chestnut + bubinga
that respect the parameters
defined with
ISO 9001 certification*

From the shell development for reaching new sound from the wood, CVL builds a shell using chestnut and bubinga plies in a particular veneer conformation and wood features.

The result is a warm full sound with a great and special attack.

The best choice are the wooden hoops to exalt the sound features and design



OPTIONS

- All dimensions available
- Chrome hardware
- Black hardware
- Black or white bass drum Remo heads
- 23 mm Triple flange hoops
- Wooden hoops
- Bi-colour bass drum CVL Drums logo
- Tip suspension system
- All finishes available
- Remo ambassador head CVL Drums marked or Evans heads



EVOLUTIVE PROJECTS

Sometimes a details can make the difference...

CVL Drums develops with Lenzotti strumenti musicali at Modena (IT) a special drum set.

This set is made with 100% birch shell of same thickness and reinforcement ring making a inverted bearing edge. The I.B.E. (inverted bearing edge) project name comes from this special feature.

The sound is controlled and define and the tuning is unique with a gret bass frequency.



OPTIONS

- All dimensions available
- Chrome hardware
- Black hardware
- Black or white bass drum Remo heads
- 23 mm Triple flange hoops
- Wooden hoops
- Bi-colour bass drum CVL Drums logo
- Tip suspension system
- All finishes available
- Remo head CVL Drums marked or Evans heads

I.B.E. shell project



WOODEN HOOPS

One of CVL's top product! Taking advantage of the technology used in the automotive market, CVL has been created and designed wooden hoops that are characterized by hardness (sticks break before than the hoop) and the absence of splinters. This is a significant change in sound field, moreover CVL offers the chance of paint the wooden hoops looking to drummer taste to obtain the best from sound but also by the design. CVL assures the top care of hoop details, have a look to snare unit bed or ftom leg!

8"

10"

12"

13"

14"

16"

18"

20"

22"

SOUND

- Warm and full-bodied sonorous but also clearness and well definite sound
- Great rimshot response and sound power
- Less metallic sounds

Beech

African mahogany

Lacquer

Mat

White

Black



CARBON FINISH LUGS



With CVL set you can choose different shapes of carbon finished lugs.

CVL uses a technology to obtain a particular finishing like carbon fiber and maintain a polish surface.

This lug is available on long or shaped with double or single tension rod.

A detail that give you an aggressive look..



Specialized

Are you searching the top of custom? CVL Drums develops the Graphics project to extend the custom drums concept.

Choose or create the subject and we re-create it in the wood with the fire and apply a natural lacquer or mat finish or we airbrush in the shell combined with all finishes.

CVL Drums allow to you to use your paint on your snare or drums set shells using different graphics method.

CUSTOM TATTOO



AEROGRAFICS



Graphics project



CATALOGO 2012-2013

LUGS PROJECT



COMING SOON...



CVL Drums with Stefy Line partnership develops a semi hard case line to protect the CVL products and to give to its customers the best protection for the great CVL Drums quality.

Leather and tissue hand made in Italy and the Italian flag stamped, to remember the Made in Italy quality thanks also to the partnership choice.



Soft



Available with custom sizes for snare, drums set and percussion

soft line with tissue and leather and without internal protection

semi hard line with tissue and leather and with internal peluche protection 1 cm

Both line with pockets, shoulder bag and handle bag
Logo CVL Drums stamped and Logo Stefy line 3D

Semi-hard



CASES





BASIC T- SHIRT
MONOCHROME LOGO

COLOURS

WHITE
BLACK



PRO T- SHIRT

ITALIAN FLAG
BI CHROME LOGO

COLOURS

WHITE
BLACK



POLO

ITALIAN FLAG
BI CHROME EMBROIDERED
LOGO

COLOURS

WHITE



CAP

ITALIAN FLAG
BI CHROME EMBROIDERED
LOGO

COLOURS

WHITE



TOWEL

ITALIAN FLAG
BI CHROME EMBROIDERED
LOGO

COLOURS

WHITE



www.cvl drums.com

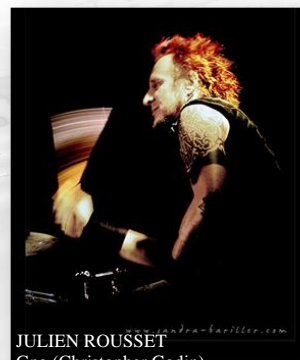




IAH SAZZAH
Roy pacy & Aretuska



ELE DIANA
La fame di Camilla



JULIEN ROUSSET
Gno (Christopher Godin)



VAN PAOLINI
Marta sui tubi



ROBERTO PERRONE
Edoardo Bennato-teacher



ANDREA FONTANA
Elisa
(end. Cajon CVL)



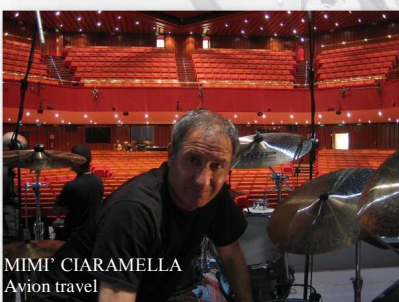
RINO CORRIERI
Caparezza-teacher



GIORGIO ZANIER
Independent-teacher



ALESSANDRO PATERNESI
Independent



MIMI' CIARAMELLA
Avion travel



IGOR DEZZUTTO
Independent-teacher



ROBERTO PELLATI
L'isabell



ADRIANO MOLINARI
Zucchero
"cassa 32"



FRANCESCO MENDOLA
Independent-Incognito-teacher



CISCO PORTONE
Independent - Concato



CLAUDIO DIRANI
Moda



YAN MAILLARD
Solid vision-Dominici



RICCARDO QUAGLIATO
Independent-teacher





GIANNI BRANCA
Independent-teacher



ALESSANDRO PIOVAN
Independent-teacher



ANDREA POLATO
Franco Battiato-
Independent



ALESSANDRO ATZORI
Independent



ALESSANDRO PELLE
Independent-teacher



STEFANO BERTOLOTTI
Independent-teacher



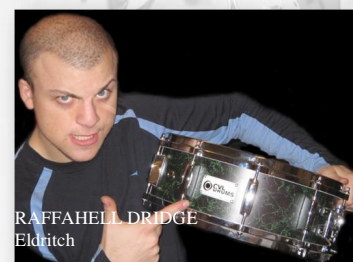
GIACOMO DE NICOLÒ
Independent-teacher



CARMINE RAIMONDI
Ramond orchestral-teacher



ELVIS FIOR
Independent-teacher



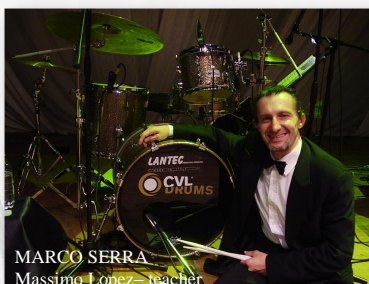
RAFFAELLI DRIDGE
Eldritch



LEANDRO BENFANTE
Independent-teacher



ERIC THOMAS
Independent-teacher



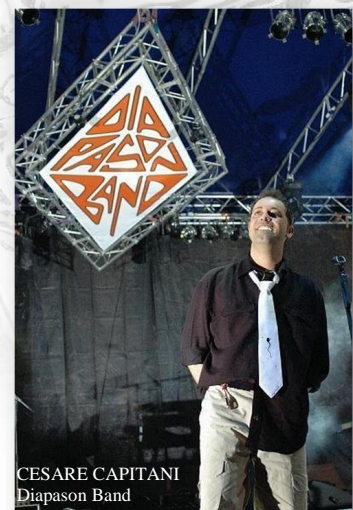
MARCO SERRA
Massimo Lopez-teacher



MARCO DI SALVIA
Node- Pino Scotto-teacher



DIEGO DE GRANDIS



CESARE CAPITANI
Diapason Band



TIZIANO BOSCOLO
Independent



STEFANO "Steve" BENNATI
Independent-teacher



CVL LEGNO srl
Zona Industriale, 38/B
30015 Chioggia (VE) ITALIA
Tel. +39 041 490099
Fax. +39 041 490396



www.myspace.com/cvldrums



www.youtube.com/DrumsVideo

www.facebook.com/cvldrums



www.twitter.com/cvldrums



www.cvldrums.com

All people can have a brand, but a CVL product is yours, designed and build only for you with your sound and design to increase your capability and to exalt your features as drummer or percussionist.



Made in Italy

Version 1.0

CVL LEGNO